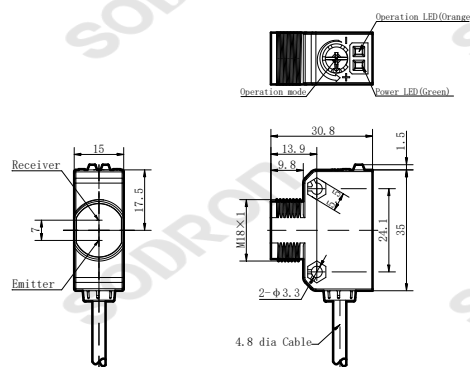




Dimensions



Model	Technical parameters	
PT18V-P02B-WR	Detection method	Retro reflection
	Model	NPN PT18V-P02BNWR PNP PT18V-P02BPWR
Product features	Sensing distance	2m(Reflector 40X60mm)
	Standard sensing object	> Φ75mm(Opaque object)
Connection	Output mode	Light-ON/Dark-ON wire switching
	Light source	Red LED 620nm
NPN	Power supply voltage	DC 12 ~ 24V ±10% , impulse (P-P) < 10%
	Directivity Angle	≥ 2°
PNP	Residual Voltage	< 2V (Load Current: ≤ 100mA)
	Current consumption	< 20mA
Light-ON	Load current	≤ 100mA
	Circuit protection	Power reverse direction connection protection
Dark-ON	Response time	< 10ms
	Indicator light	Output LED: Orange LED Power/stable: GreenLED
Light-ON	Connection	Cable 2m (PVC)
	Ambient temperature	Work: -25 ~ +55°C; Store: -40 ~ +70°C, (No dew condensation or icing allowed)
Dark-ON	Ambient humidity	Work: 35 ~ 85%RH, Store: 35 ~ 95%RH (No dew condensation)
	Ambient illumination	Sunlight: < 10,000Lx lamplight: < 3,000Lx
Light-ON	Withstand voltage	1000 VAC, 50/60 Hz, 1 min.between current-carrying parts and case
	Insulation resistance	> 20MΩ (DC500V megger) between current-carrying parts and case
Dark-ON	Anti-vibration	10~55Hz double-amplitude 1.5mmX,Y,Z 2h
	Impact resistance	500 m/s ² (X, Y, Z directions, 3 times)
Light-ON	Protection degree	IEC IP65
	Housing	PBT+ABS
Dark-ON	Material	Lens Holder ABS Lens PMMA

